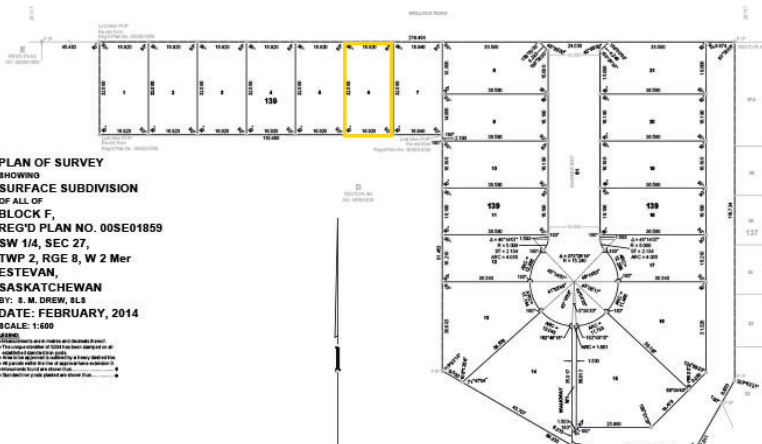


City of Estevan Residential Lots - Hawkes Bay



1515 Wellock Road



Property Description

Hawkes Bay is one of the newer developing residential areas within Royal Heights in the City of Estevan. Under architectural guidelines, housing in this neighbourhood is top quality.

This property is adjacent to St. Joseph's Hospital and an extensive park with playground and a spray park. Commercial amenities are located within walking distance.

Legal Location

Lot 6 Block 139
Plan 102154069

Parcel Area

0.054 ha. (0.13 ac.)

Dimension

16.92m x 31.98m

Sale Price

\$103,000
purchase options in place

Status

Serviced, drainage utility in rear of lot

Zoning

Residential - R1
Architectural guidelines in place

Alley

none

Amenities

Hospital, parks, nearby commercial outlets



Land Development or Economic Development

306-634-1800

info@estevan.ca

www.estevan.ca

1102 Fourth Street, Estevan, Sk. S4A 0W7