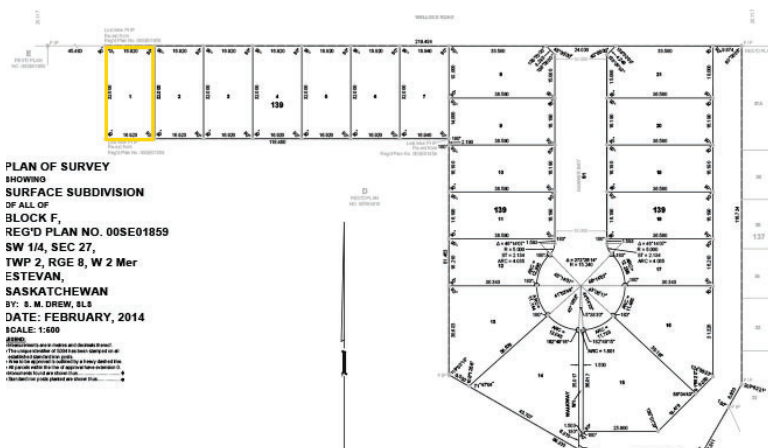


# City of Estevan Residential Lots - Hawkes Bay



1505 Wellock Road



## Property Description

Hawkes Bay is one of the newer developing residential areas within Royal Heights in the City of Estevan. Under architectural guidelines, housing in this neighbourhood is top quality.

This property is adjacent to St. Joseph's Hospital and an extensive park with playground and a spray park. Commercial amenities are located within walking distance.

## Legal Location

Lot 1 Block 139  
Plan 102154069

## Parcel Area

0.054 ha. (0.13 ac.)

## Dimension

16.92m x 31.99m

## Sale Price

\$103,000  
purchase options in place

## Status

Serviced, drainage  
utility in rear of lot

## Zoning

Residential - R1  
Architectural guidelines in  
place

## Alley

none

## Amenities

Hospital, parks, nearby  
commercial outlets



**Land Development or Economic Development**

306-634-1800

[info@estevan.ca](mailto:info@estevan.ca)

[www.estevan.ca](http://www.estevan.ca)

1102 Fourth Street, Estevan, Sk. S4A 0W7